



HOUSING & REGENERATION FINANCE SUMMIT

31 OCTOBER 2019 | COUNTY HALL, LONDON

Strategy and funding for homes and places

Bringing together a leading audience of 200 directors of finance, heads of regeneration, investors and sector experts to discuss securing inward investment to secure community needs

3 FOR 2 OFFER
use booking code **RG342**



**“Great speakers
and useful content”**

Amy Deane, Broadacres Housing Association

To book your place or to find out more visit
www.socialhousing.co.uk/hrfs



#HRegen

Created by the teams behind:

SOCIALHOUSING

In partnership with:

Room151

Lead sponsor:



Co-sponsors:

MEARS





Confirmed sector-leading speakers include:



Tim Atkins

Managing director,
growth and place,
Cheltenham Borough
Council



Chas Bradfield

Strategic director,
place, Winchester
City Council



Graham Burgess

Chair,
Torus



Tracey Coleman

Director of planning
and regeneration,
Guildford Borough Council



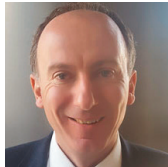
Helen Evans

Chief executive,
Network Homes



Peter Gladwell

Head of public
sector partnerships,
Legal & General



Conrad Hall

Corporate director
of resources,
Newham Council



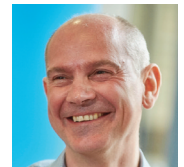
Dan Hawthorn

Director of housing,
regeneration and
planning, Haringey
Borough Council



Eleanor Jukes

Senior investment and
strategic content manager,
Legal & General



Roger Keeling

Strategic asset
management director,
Sovereign



Danny Mather

Head of
corporate finance,
Warrington Borough
Council



Clare Miller

Group chief executive,
Clarion



Martin Reeves

Chief executive,
Coventry City Council



James Rolfe

Chief operating officer,
Anglia Ruskin University



Simon Rubinsohn

Chief economist,
RICS, and non-executive
director,
L&Q



Jackie Sadek

Founder and
chief executive,
UK Regeneration



Tanya Srikandan

Head of commercial,
Mears Group



Sharon Strutt

Head of regeneration,
London Borough of
Redbridge



Steve Thompson

Director of resources,
Blackpool Council



Ellen Vernon

Regional
programme team,
One Public Estate

5 reasons you wouldn't want to miss this



Understanding how
Brexit, politics and the
economy will impact
regeneration plans



Gaining insights into
how to manage risk in
complex regeneration
projects



Learning from regeneration
case studies from leading
housing associations and
councils with various types
of partners



Exploring new solutions
for ownership, financial
risk and innovative
financial partnerships



Hearing from councils
that are leading the way
in delivering regeneration
and the lessons they
have learned

08.30 REGISTRATION

09.30 WELCOME AND CHAIR'S OPENING REMARKS

PETE GLADWELL, Head of public sector partnerships, [legal & General](#)

09.40 KEYNOTE: BREXIT, HOUSING AND REGENERATION

The ambition to redevelop towns and cities and create hundreds of thousands of new homes matches the urgency with which government wants to see it happen. However, stakeholders operate against a backdrop of significant political upheaval. This summit takes place on the day Britain is scheduled to leave the EU. How will the economic environment influence the new government's priorities?

SIMON RUBINSOHN, Chief economist RICS, Non-executive director, [L&Q](#)

10.10 FUTURE CITIES AND URBAN REGENERATION

ELEANOR JUKES, Senior investment and strategic content manager, [Legal & General](#)

10.30 THE CAPITAL IS THERE, BUT WILL POLITICS PREVENT IT BEING PUT TO WORK?

Large-scale developments are complicated enough for councils without any of the politics that comes with local government. Given the polarisation of party politics today and the allure of housing and regeneration to meeting ideological goals on both sides of the debate, what can the finance professional reasonably expect to get over the line in the current climate? If funding is in plentiful supply, what's holding up progress? What lessons can be learned about managing risk in complex regeneration projects?

DUNCAN WHITFIELD, Strategic director, [Southwark Council](#)

JACKIE SADEK, Founder and chief executive, [UK Regeneration](#)

MARTIN REEVES, Chief executive, [Coventry City Council](#)

HELEN EVANS, Chief executive, [Network Homes](#)

11.15 NETWORKING BREAK

11.45 HRA VS HOUSING COMPANIES: WHAT IS YOUR BEST ROUTE TO MARKET?

For some authorities, the lifting of the HRA borrowing cap was a significant enough incentive to prompt a renewed business case for council housing. For others, housing companies still provide the best route to market. What's influencing their calculations?

CONRAD HALL, Corporate director of resources, [Newham Council](#)

DANNY MATHER, Head of corporate finance, [Warrington Borough Council](#)

DAN HAWTHORN, Director of housing, regeneration and planning, [Haringey Borough Council](#)

ROGER KEELING, Strategic asset management director, [Sovereign](#)

UTILITIES, UNIVERSITIES AND EUROPEAN CHAMPIONS

Whether you're working with higher education institutes, utilities companies or central government to achieve your housing or regeneration goals, the financial planning and project management can be fraught with complexity. Our panel of practitioners from different backgrounds will be asked how they envisage financial partnerships evolving across housing and regeneration and what's driving place-making partnerships.

JAMES ROLFE, Chief operating officer, [Anglia Ruskin University](#)

TRACEY COLEMAN, Director of planning and regeneration, [Guildford Borough Council](#)

ELLEN VERNON, Regional programme team, [One Public Estate](#)

12.30 SPONSORED SESSION: HOMELESSNESS AND TEMPORARY ACCOMMODATION

Temporary accommodation has been a major drain on council finances with some private landlords guilty of egregious opportunism. What models are emerging to deal with homelessness and why are housing associations less engaged than they might be?

TANYA SRIKANDAN, Head of commercial, [Mears Group](#)

SPONSORED SESSION: ENVIRONMENTAL SUSTAINABILITY AND FUTURE PROOFING

Future housing and regeneration schemes that fail to integrate environmental factors into their financial models are likely to fall foul of regulation as well as public opinion. What must business plans cover today to ensure our towns and homes are still fit for purpose in years to come?

13.15 NETWORKING LUNCH

14.15 PANEL: WHAT WOULD WE DO DIFFERENTLY NOW?

There's much to be learned from both successful major projects and those that didn't achieve as much as expected. In a candid, Chatham House Rule discussion, we delve into the experiences that have provided important lessons for future financial plans and project managers.

MODERATOR: DAN HAWTHORN, Director of housing, regeneration and planning, [Haringey Borough Council](#)

CHAS BRADFIELD, Strategic director, place, [Winchester City Council](#)

CLARE MILLER, Group chief executive, [Clarion Housing Group](#)

LIZ PEACE, Chair, [Old Oak Common and Park Royal Development Corporation](#)

JEREMY STIBBE, Group director, regeneration and assets, [Notting Hill Genesis](#)

15.15 NETWORKING BREAK

15.45 OWNERSHIP AND FINANCIAL RISK: FINDING A SOLUTION THAT FITS YOUR NEEDS

Hear case studies of local authorities and housing associations who have taken a particular view on the availability of capital, the need to own land or not, and what level of risk they can stomach in order to push ahead with their projects. What are their financial plans built on? What will determine their success and to what extent will they work in partnership with others?

TIM ATKINS, Managing director – growth and place, [Cheltenham Borough Council](#)

STEVE THOMPSON, Director of resources, [Blackpool Council](#)

GRAHAM BURGESS, Chair, [Torus](#)

DOUGLAS MUNRO, Head of structuring and solutions, [Legal & General](#)

FINANCIAL BARRIERS AND SOLUTIONS TO REDEFINING THE HIGH STREET

As internet shopping and home delivery sweeps all before it, the existence of the high street, at least in its current form, is being picked apart. How are finance directors and heads of place working together to keep their high streets alive or are they embracing completely new directions?

SHARON STRUTT, Head of regeneration, [London Borough of Redbridge](#)

16.30 CLOSING PLENARY: IS TODAY A DAY FOR OPTIMISM?

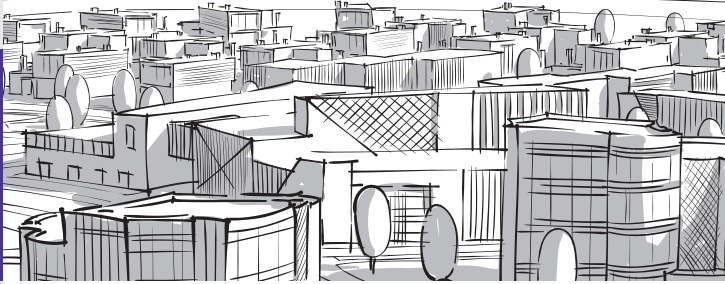
As we close our second annual summit, looking out from County Hall across the Thames to the Houses of Parliament, we may or may not be members of the European Union. Much uncertainty surrounds the day itself but equally the future for housing and regeneration. How will delegates inside the conference hall work together with policymakers makers across the river to tackle what is perennially described as a national crisis?

17.00 CLOSING REMARKS

PETE GLADWELL, Head of public sector partnerships, [Legal & General](#)

17.10 DRINKS RECEPTION

18.00 CLOSE OF SUMMIT

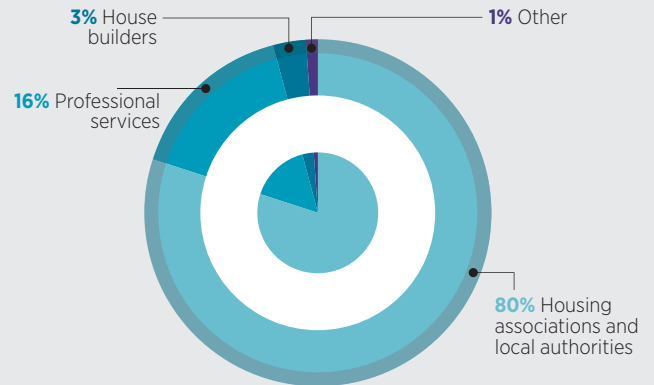


Meet the housing and regeneration sector under one roof

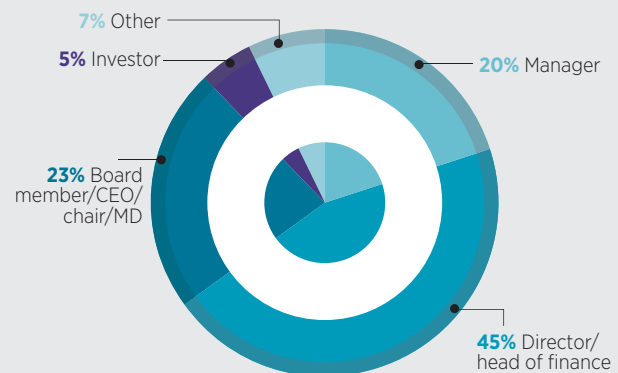
Organisations that attended last year include:



80% attendance of finance directors directors and treasurers from housing associations and local authorities



Bringing together senior business leaders and finance leaders



How to book

3 easy ways to register

- www.socialhousing.co.uk/regeneration-summit
- 020 7772 8399
- tony.pedra@oceanmedia.co.uk

Choose your option

	Early bird (by 13 September)	Standard
Local authority and housing association rate	£399	£459
General rate	£599	£699

Venue details:

etc.venues, County Hall, Belvedere Road, London SE1 7PB www.etcvenues.co.uk/venues/countyhall

Sponsorship opportunities

Contact Ned James on 020 7772 8410 or email ned.james@oceanmedia.co.uk

www.socialhousing.co.uk/regeneration-summit